

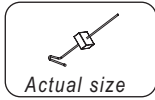


Mackool Cataract Support System

Titanium Instruments

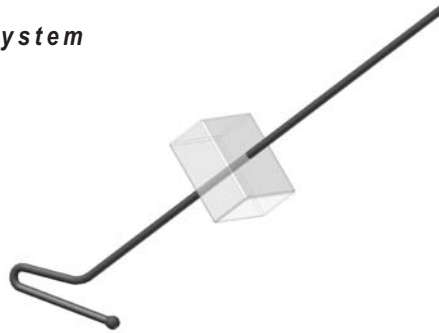
6-140

Mackool Cataract Support System



Actual size

- Sold individually, 6 to 8 recommended
- 0.3mm x 2.5mm hook

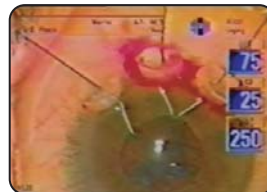


Example:

Capsulorhexis has been performed and phaco begun. Extreme zonular weakness is discovered, phaco tip is removed from eye and chamber is filled with viscoelastic; individual Retractors are inserted to capture margins of capsulorhexis. Gradual tightening of each retractor provides excellent fixation of capsular sac and fornices. Phaco and cortex removal are completed in standard fashion (this is in contrast to situations when an endocapsular ring has been inserted and cortex removal is extremely difficult due to entrapment of cortex by the ring). After cortex removal, an endocapsular ring is inserted and the Mackool Cataract Support System / Retractors are removed through phaco incision



First Mackool Cataract Support System / retractor is introduced



Three Mackool Cataract Support System / retractors in position



Phaco and cortex removal completed as normal.



Finally Mackool Cataract Support System / retractors are removed.

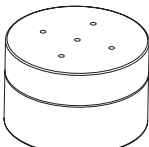


Procedure using five Mackool Cataract Support System / retractors



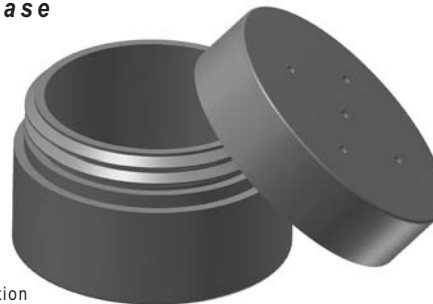
6-135

Mackool Holder and Sterilizing Case



Actual size

- 20.0mm diameter x 13.0mm height
- Secures Mackool Cataract Support System for sterilization



Duckworth & Kent Ltd.

Terence House
7 Marquis Business Centre
Royston Road, Baldock
Herts SG7 6XL England

Tel: +44 (0)1462 893254 Fax: +44 (0)1462 896288

Web: www.duckworth-and-kent.com

Email: info@duckworth-and-kent.com

www.duckworth-and-kent.com

