



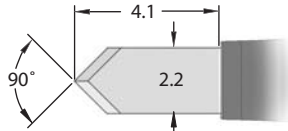
# Duckworth & Kent

Ophthalmic Titanium Surgical Instruments

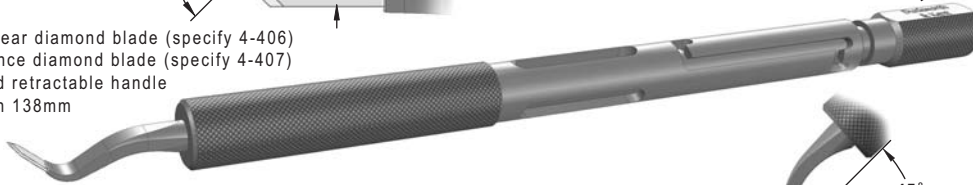
## Coaxial Phaco Through 2.2mm Incision

Titanium Instruments

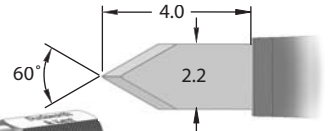
**4-406** *Angled Diamond Knife (2.2mm Spear)*



- 2.2 spear diamond blade (specify 4-406)
- 2.2 lance diamond blade (specify 4-407)
- Angled retractable handle
- Length 138mm



**4-407** *Angled Diamond Knife (2.2mm Lance)*



**2-847-4**  
*DK Capsulorhexis Forceps*



- Delicate tips with platforms for grasping
- Pointed tip used to puncture as well as tear capsule
- 0.9mm opening at tip
- Curved 23 gauge shaft
- Squeeze action activates both jaws
- Round squeeze action handle, length 123mm

*Salvitti Akahoshi Micro Prechopper*  
see reverse side for more information

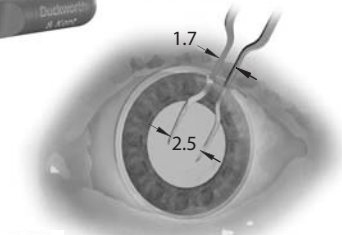
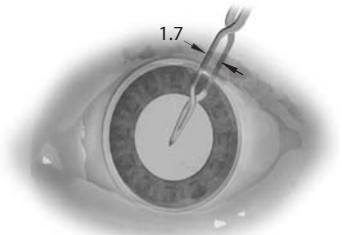
**2-2-817**  
*Small Tip*



**2-2-817-1**  
*Large Tip*



- Tips fully open to 2.5mm
- Flattened tips in vertical plane
- 1.7mm maximum width at incision point
- Straight shafts, reverse cross action style
- New round handle, length 123mm



**DK7717**  
*DK Lens Loading Forceps*



- Suitable lens loading forceps for the Alcon MONARCH II sterile single use "B" and "C" cartridges
- New round handle, length 120mm

**DK7797**  
*Injector*  
see reverse side for more information

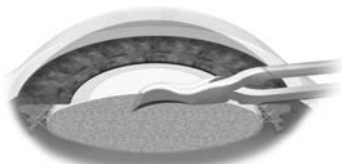
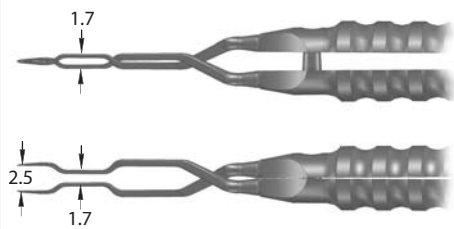


- Front loading cartridge, secured by rotating bezel
- Suitable for Alcon MONARCH® II sterile single use cartridge for implantation of ALCON® ACRYSOFF® Acrylic foldable intraocular lenses
- Injector length (without cartridge) 163.5mm

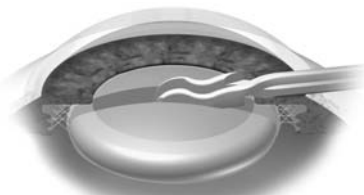
# Coaxial Phaco Through 2.2mm Incision

## 2-2-817 or 2-2-817-1 Salvitti Akahoshi Micro Prechopper

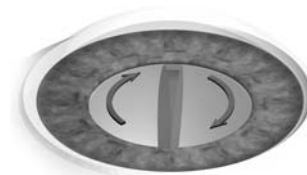
The Micro Prechopper forceps are designed to crack the nucleus into four segments with minimal stretching of the incision. The shafts of the forceps open to a maximum of 1.7mm at the incision point whilst the tips open to 2.5mm. The tip of the instrument has a sharp point that initially penetrates the nucleus; then squeezing the forceps the tips open to crack and split the nucleus. By flipping the forceps over, the blunt edge may be used to go deeper in the initial split to then fully crack the nucleus. Using the blunt edge of the tip reduces the risk of damaging the posterior capsule.



1. Penetrate nucleus



2. Split nucleus



3. Rotate two halves 90 degrees



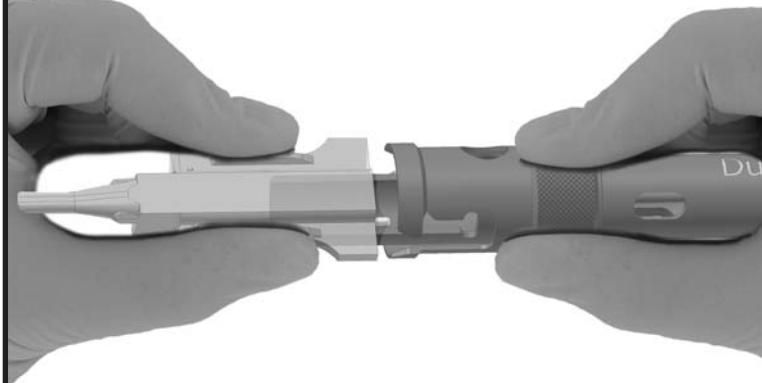
4. Rotate forceps tip over, split and crack nucleus



5. Pull back and split final quarters

## DK7797 Injector

The new injector is an alternative to the Alcon MONARCH® II titanium handpiece, featuring a plunger mechanism instead of a screw mechanism for fast, efficient single-handed delivery.



◀ Cartridge is loaded into the front of the injector.

▼ Cartridge is secured in place by rotating the sleeve.



➤ Complete delivery process is carried out with a single hand movement.



### Duckworth & Kent Ltd.

Terence House  
7 Marquis Business Centre  
Royston Road, Baldock  
Herts SG7 6XL England

Tel: +44 (0)1462 893254 Fax: +44 (0)1462 896288  
Web: [www.duckworth-and-kent.com](http://www.duckworth-and-kent.com)  
Email: [info@duckworth-and-kent.com](mailto:info@duckworth-and-kent.com)

[www.duckworth-and-kent.com](http://www.duckworth-and-kent.com)

